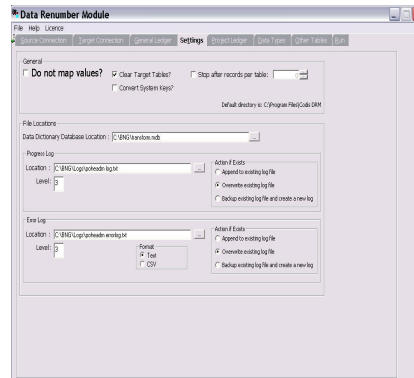
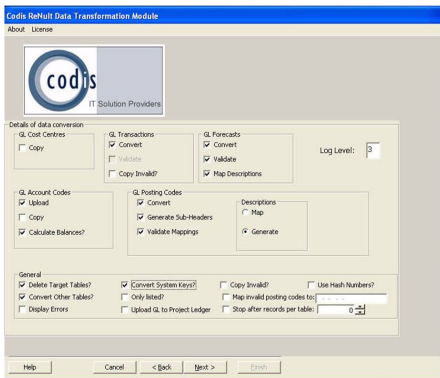


Data Restructuring Module

The Data Restructuring Module, DRM, has been developed over a number of years by experts in the fields of Business and Sage.

DRM can be used to renumber posting codes, stock codes, supplier codes and customer codes.



These areas of expertise have been combined to create software that can re-number your chart of accounts for your entire Sage Enterprise System.

The versatile nature of the software allows it to be used with Sage CS-3, Enterprise, Line 200 and Line 500.

DRM allows the complete renumbering of all occurrences of the codes within the Sage database using user-defined mappings. This also includes core sub-ledger modules and additional sub-ledger modules upon request.

Thank you, to you and your team for the commitment and professionalism we have seen during our project to migrate Sovereign to our new standard chart of accounts. The hard work and commitment of your team is much appreciated and has helped us deliver a smooth migration to a very tight timescale. Thank you again for the support you and your team have given us.

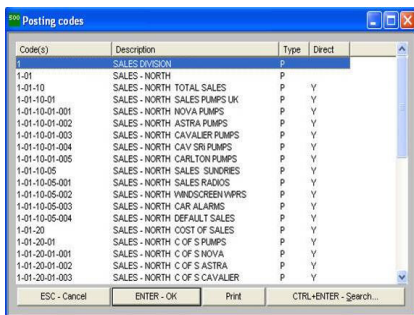
Jenny Sener,
OCS Group



Data Restructuring Module

Key Features

DRM has been typically used to rationalise chart of accounts that have grown cumbersome over the years, often in parallel with an implementation of Project Ledger.



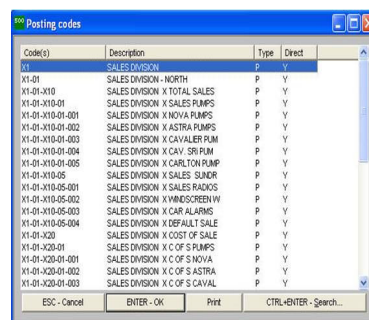
Code(s)	Description	Type	Direct
	SALES DIVISION	P	
1-01	SALES - NORTH	P	
1-01-10	SALES - NORTH TOTAL SALES	P	Y
1-01-10-01	SALES - NORTH SALES PUMPS UK	P	Y
1-01-10-01-001	SALES - NORTH NOVA PUMPS	P	Y
1-01-10-01-002	SALES - NORTH ASTRA PUMPS	P	Y
1-01-10-01-003	SALES - NORTH CAVALIER PUMPS	P	Y
1-01-10-01-004	SALES - NORTH CAV SRI PUMPS	P	Y
1-01-10-01-005	SALES - NORTH CARLTON PUMPS	P	Y
1-01-10-05	SALES - NORTH SALES SUNDRIES	P	Y
1-01-10-05-001	SALES - NORTH SALES RADIOS	P	Y
1-01-10-05-002	SALES - NORTH WINDSCREEN WIPERS	P	Y
1-01-10-05-003	SALES - NORTH CAR ALARMS	P	Y
1-01-10-05-004	SALES - NORTH DEFAULT SALES	P	Y
1-01-20	SALES - NORTH COST OF SALES	P	Y
1-01-20-01	SALES - NORTH C OF S PUMPS	P	Y
1-01-20-01-001	SALES - NORTH C OF S NOVA	P	Y
1-01-20-01-002	SALES - NORTH C OF S ASTRA	P	Y
1-01-20-01-003	SALES - NORTH C OF S CAVALIER	P	Y

Source Screen

It is especially useful when companies with different chart of accounts merge; or when the current chart of accounts does not satisfy reporting requirements.

A highlight of the software is the ability to generate new meaningful descriptions that correspond to the new codes.

Another useful feature is all renumberings are audited; two logs are kept, a main log with all of the details of renumbering. In addition a detailed error log describing any problems that occur during renumbering.



Code(s)	Description	Type	Direct
	SALES DIVISION	P	
X1-01	SALES DIVISION - NORTH	P	Y
X1-01-X10	SALES DIVISION X TOTAL SALES	P	Y
X1-01-X10-01	SALES DIVISION X SALES PUMPS	P	Y
X1-01-X10-01-001	SALES DIVISION X NOVA PUMPS	P	Y
X1-01-X10-01-002	SALES DIVISION X ASTRA PUMPS	P	Y
X1-01-X10-01-003	SALES DIVISION X CAVALIER PUMPS	P	Y
X1-01-X10-01-004	SALES DIVISION X CAV SRI PUMPS	P	Y
X1-01-X10-01-005	SALES DIVISION X CARLTON PUMPS	P	Y
X1-01-X10-05	SALES DIVISION X SALES SUNDR	P	Y
X1-01-X10-05-001	SALES DIVISION X SALES RADIOS	P	Y
X1-01-X10-05-002	SALES DIVISION X WINDSCREEN W	P	Y
X1-01-X10-05-003	SALES DIVISION X CAR ALARMS	P	Y
X1-01-X10-05-004	SALES DIVISION X DEFAULT SALE	P	Y
X1-01-X20	SALES DIVISION X COST OF SALE	P	Y
X1-01-X20-01	SALES DIVISION X C OF S PUMPS	P	Y
X1-01-X20-01-001	SALES DIVISION X C OF S NOVA	P	Y
X1-01-X20-01-002	SALES DIVISION X C OF S ASTRA	P	Y
X1-01-X20-01-003	SALES DIVISION X C OF S CAVAL	P	Y

Target Screen

The long history of conversions and positive user feedback are a testimony to the software's robust and user friendly nature. DRM has led to substantial savings in business processes and allows the user to control all aspects of renumbering, whilst utilising the powerful control and validation of Sage.

- Renumber Posting Codes, Stock Codes, Customer Codes and Supplier Codes

- Able to convert entire company records in a reasonable amount of time

- All General Ledger data is renumbered, including transaction, budget, short codes and historical data

sage

Developer

Sage
Innovation
Award
2006

Winner